

# SMD Shielded Power Inductors

## GSLQ201610/GSLQ252010/GSLQ252012

## GSLQ303010/GSLQ303012/GSLQ303015

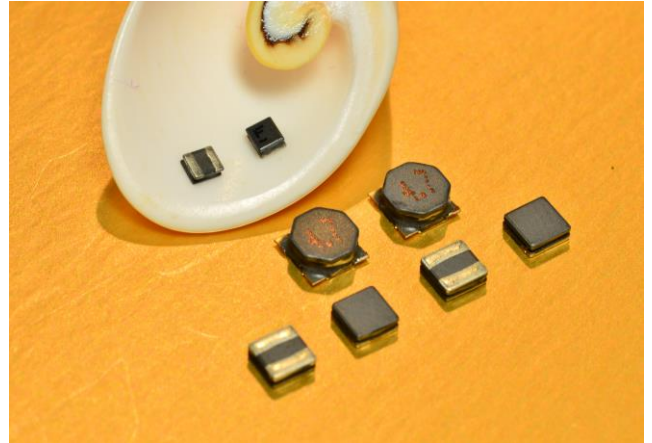
## GSLQ404010/GSLQ404012/GSLQ404018

### Features (特長)

- High frequency (高頻)
- Highest possible SRF as well as excellent Q values (高共振頻率及高品質因數)
- The constitutive property is good and easy to operate (結構性佳、使用方便)

### Applications (用途)

- Pager, Cordless phone & High Frequency Communication Products (呼叫器、行動電話及高頻通訊類產品)
- Intercom, CATV (對講機、CATV)



### Product Identification (產品識別)

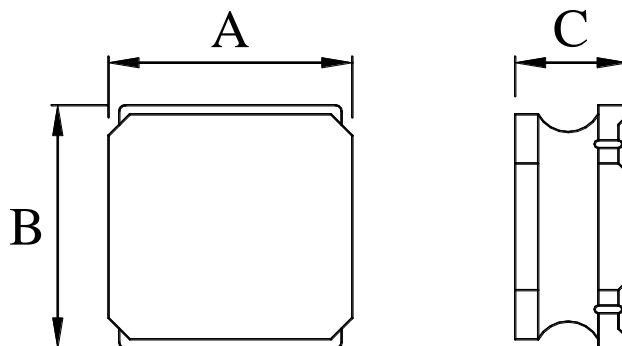
GSLQ201610 -           (Ex. GSLQ201610-1R0N)

1                      2                      3

1. SMT Shielded Power Inductors (閉磁式功率電感)  
(GSLQ201610, GSLQ252010, GSLQ252012, GSLQ303010, GSLQ303012, GSLQ303015, GSLQ404010, GSLQ404012, GSLQ404018)
2. Inductance (電感值)
3. Tolerance (誤差值) ( 參照表 M 20%, N 30% )



### Configurations & Dimensions (結構圖及規格尺寸)



Unit In mm

Item (型式)	A ±0.2	B ±0.2	C (max)
GSLQ201610	2.0	1.6	1.0
GSLQ252010	2.5	2.0	1.0
GSLQ252012	2.5	2.0	1.2

Item (型式)	A ±0.2	B ±0.2	C (max)
GSLQ303010	3.0	3.0	1.0
GSLQ303012	3.0	3.0	1.2
GSLQ303015	3.0	3.0	1.5
GSLQ404010	4.0	4.0	1.0
GSLQ404012	4.0	4.0	1.2
GSLQ404018	4.0	4.0	1.8