

# SMT Shielded Power Inductors

## GSD7011C / GSD7014C / GSD7026C

### GSD1014C

#### Features (特長)

- Magnetically shielded construction (閉磁路構造設計)
- Low Profile (薄型結構)
- Large Current and Low DCR (大電流低直流阻抗)

#### Applications (用途)

- LCD Driver (LCD 驅動器)
- Small DC/DC converter (小型直流轉換器)

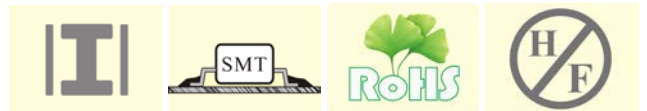


#### Product Identification (產品識別)

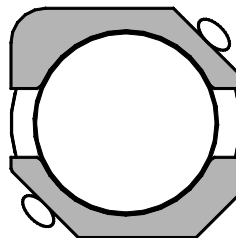
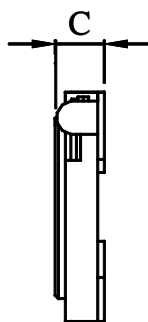
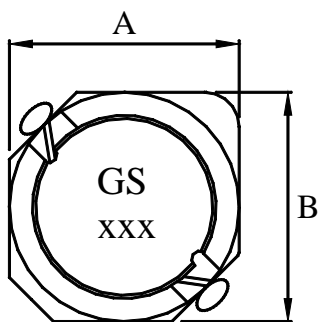
GSD7011C - \_\_\_\_\_ (Ex. GSD7011C-4R7N)

1                    2                    3

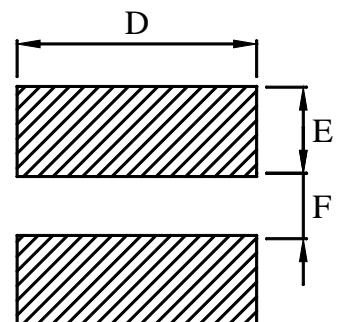
1. SMT Shielded Power Inductors (閉磁式功率電感)  
(GSD7011C, GSD7014C, GSD7026C, GSD1014C)
2. Inductance (電感值)
3. Tolerance (誤差值) ( 參照表 M 20%, N 30% )



#### Configurations & Dimensions (結構圖及規格尺寸)



#### Land Pattern



Unit In mm

Type (型式)	A (max)	B (max)	C (max)	D	E	F
GSD7011C	7.3	7.3	1.2	7.30	2.80	2.00
GSD7014C	7.3	7.3	1.5	7.30	2.80	2.00
GSD7026C	7.3	7.3	2.8	7.30	2.80	2.00
GSD1014C	10.3	10.3	1.5	10.40	3.90	3.00

♣ Design as Customer's Requested Specifications. (可依客戶特殊需求設計)

# SMT Shielded Power Inductors

## GSD7011C

Electrical Characteristics for GSD7011C Series [GSD7011C 系列電子特性規格]

Part Number 產品料號	Inductance ( $\mu$ H) 電感值 (L)	Test Freq. (KHz) 測試頻率	DCR ( $\Omega$ ) (max) 直流阻抗	Isat (A) (max) 定格電流	Irms (A) (max) 溫昇電流
GSD7011C – 4R7N	4.70	100	0.106	1.60	1.70
GSD7011C – 6R8N	6.80	100	0.150	1.30	1.55
GSD7011C – 100M	10.00	100	0.200	1.05	1.40
GSD7011C – 150M	15.00	100	0.300	0.85	1.20
GSD7011C – 220M	22.00	100	0.460	0.70	1.00

※Test Freq. : 100KHz / 0.1V.

※Operating Temp. :  $-40^{\circ}\text{C} \sim +125^{\circ}\text{C}$

※Inductance drop = 35% typ. at Isat.

※ $\Delta T=40^{\circ}\text{C}$  rise at Irms.

※Storage Temperature&Humidity :  $\leq 40^{\circ}\text{C}$  & 70% RH maximum

## GSD7014C

Electrical Characteristics for GSD7014C Series [GSD7014C 系列電子特性規格]

Part Number 產品料號	Inductance ( $\mu$ H) 電感值 (L)	Test Freq. (KHz) 測試頻率	DCR ( $\Omega$ ) (max) 直流阻抗	IDC (A) (max) 定格電流
GSD7014C – 3R3N	3.30	100	0.070	2.10
GSD7014C – 4R7N	4.70	100	0.090	1.70
GSD7014C – 6R8N	6.80	100	0.120	1.50
GSD7014C – 100M	10.00	100	0.180	1.30
GSD7014C – 150M	15.00	100	0.240	1.10
GSD7014C – 220M	22.00	100	0.360	0.90

※Test Freq. : 100KHz / 0.1V.

※Operating Temp. :  $-40^{\circ}\text{C} \sim +125^{\circ}\text{C}$

※Inductance drop = 20% typ. at IDC.

※Storage Temperature&Humidity :  $\leq 40^{\circ}\text{C}$  & 70% RH maximum

# SMT Shielded Power Inductors

## GSD7026C

Electrical Characteristics for GSD7026C Series [GSD7026C 系列電子特性規格]

Part Number 產品料號	Inductance ( $\mu$ H) 電感值 (L)	Test Freq. (KHz) 測試頻率	DCR ( $\Omega$ ) (max) 直流阻抗	IDC (A) (max) 定格電流
GSD7026C – 2R2N	2.20	100	0.020	4.00
GSD7026C – 2R7N	2.70	100	0.030	3.60
GSD7026C – 3R3N	3.30	100	0.035	3.20
GSD7026C – 4R7N	4.70	100	0.040	2.60
GSD7026C – 6R8N	6.80	100	0.055	2.20
GSD7026C – 100M	10.00	100	0.065	1.80
GSD7026C – 220M	22.00	100	0.160	1.20
GSD7026C – 470M	47.00	100	0.340	0.90
GSD7026C – 680M	68.00	100	0.450	0.80

※Test Freq. : 100KHz / 0.1V.

※Operating Temp. :  $-40^{\circ}\text{C} \sim +125^{\circ}\text{C}$

※Inductance drop = 20% typ. at IDC.

※Storage Temperature&Humidity :  $\leq 40^{\circ}\text{C}$  & 70% RH maximum

## GSD1014C

Electrical Characteristics for GSD1014C Series [GSD1014C 系列電子特性規格]

Part Number 產品料號	Inductance ( $\mu$ H) 電感值 (L)	Test Freq. (KHz) 測試頻率	DCR ( $\Omega$ ) (max) 直流阻抗	IDC (A) (max) 定格電流
GSD1014C – 2R2N	2.20	100	0.045	3.50
GSD1014C – 3R3N	3.30	100	0.060	3.20
GSD1014C – 4R7N	4.70	100	0.070	2.80
GSD1014C – 5R6N	5.60	100	0.085	2.00
GSD1014C – 100M	10.00	100	0.150	1.70
GSD1014C – 120M	12.00	100	0.180	1.65
GSD1014C – 150M	15.00	100	0.250	1.60
GSD1014C – 220M	22.00	100	0.320	1.30
GSD1014C – 470M	47.00	100	0.600	0.85

※Test Freq. : 100KHz / 0.1V.

※Operating Temp. :  $-40^{\circ}\text{C} \sim +125^{\circ}\text{C}$

※Inductance drop = 20% typ. at IDC.

※Storage Temperature&Humidity :  $\leq 40^{\circ}\text{C}$  & 70% RH maximum