

SMT Shielded Power Inductors

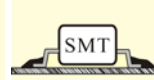
GSSLF7028A / GSSLF7045A

Features (特長)

- Magnetically shielded construction (閉磁路構造設計)
- Compact and thin (輕便薄小)
- Large Current and Low DCR (大電流低直流阻抗)

Applications (用途)

- Computers, DC/DC converter, VCR Camera. (電腦、直流轉換器、攝影機)



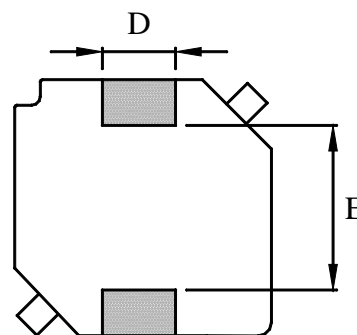
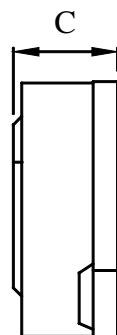
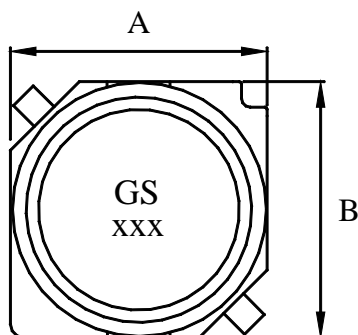
Product Identification (產品識別)

GSSLF7028A - ____ ____ (Ex. GSSLF7028A-3R3M)

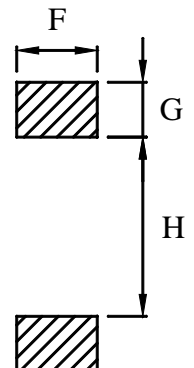
1 2 3

1. SMT Shielded Power Inductors (閉磁式功率電感)
(GSSLF7028A, GSSLF7045A)
2. Inductance (電感值)
3. Tolerance (誤差值) (參照表 M 20%, N 30%)

Configurations & Dimensions (結構圖及規格尺寸)



Land Pattern



Unit In mm

Type (型式)	A	B	C	D	E (Typ.)	F	G	H
GSSLF7028A	±0.2	±0.2	2.8±0.2	±0.2	4.5	2.2	1.5	4.9
GSSLF7045A	±0.2	±0.2	4.5±0.3	±0.2	4.5	2.2	1.5	4.9

♣Design as Customer's Requested Specifications. (可依客戶特殊需求設計)

SMT Shielded Power Inductors

GSSLF7028A

Electrical Characteristics for GSSLF7028A Series [GSSLF7028A 系列電子特性規格]

Part Number 產品料號	Inductance (μ H) 電感值 (L)	Test Freq. (KHz) 測試頻率	DCR (Ω) ($\pm 20\%$) 直流阻抗	IDC (A) (max) 定格電流
GSSLF7028A – 3R3M	3.30	100	0.037	1.60
GSSLF7028A – 4R7M	4.70	100	0.045	1.50
GSSLF7028A – 6R8M	6.80	100	0.059	1.30
GSSLF7028A – 100M	10.00	100	0.083	1.10
GSSLF7028A – 150M	15.00	100	0.130	0.88
GSSLF7028A – 220M	22.00	100	0.180	0.75
GSSLF7028A – 330M	33.00	100	0.240	0.65
GSSLF7028A – 470M	47.00	100	0.340	0.54

※Test Freq. : 100KHz / 0.5V.

※Operating Temp. : $-40^{\circ}\text{C} \sim +125^{\circ}\text{C}$

※Inductance drop=10% typ. at IDC.

※Storage Temperature&Humidity : $\leq 40^{\circ}\text{C}$ & 70% RH maximum

GSSLF7045A

Electrical Characteristics for GSSLF7045A Series [GSSLF7045A 系列電子特性規格]

Part Number 產品料號	Inductance (μ H) 電感值 (L)	Test Freq. (KHz) 測試頻率	DCR (Ω) ($\pm 20\%$) 直流阻抗	Isat (A) (max) 定格電流	Irms (A) (max) 溫昇電流
GSSLF7045A – 3R3M	3.30	100	0.020	2.50	2.30
GSSLF7045A – 4R7M	4.70	100	0.030	2.00	2.10
GSSLF7045A – 6R8M	6.80	100	0.039	1.70	1.74
GSSLF7045A – 100M	10.00	100	0.036	1.30	1.78
GSSLF7045A – 150M	15.00	100	0.052	1.10	1.53
GSSLF7045A – 220M	22.00	100	0.061	0.90	1.34
GSSLF7045A – 330M	33.00	100	0.096	0.82	1.09
GSSLF7045A – 470M	47.00	100	0.125	0.75	0.92
GSSLF7045A – 680M	68.00	100	0.175	0.60	0.77
GSSLF7045A – 101M	100.00	100	0.250	0.50	0.65
GSSLF7045A – 151M	150.00	100	0.340	0.40	0.55
GSSLF7045A – 221M	220.00	100	0.520	0.33	0.45
GSSLF7045A – 331M	330.00	100	0.740	0.25	0.37
GSSLF7045A – 471M	470.00	100	1.050	0.22	0.31
GSSLF7045A – 681M	680.00	100	1.480	0.20	0.27
GSSLF7045A – 102M	1000.00	100	2.280	0.14	0.25

※Test Freq. : 100KHz / 0.5V.

※Operating Temp. : $-40^{\circ}\text{C} \sim +125^{\circ}\text{C}$

※Inductance drop=10% typ. at Isat.

※ $\Delta T=40^{\circ}\text{C}$ rise at Irms

※Storage Temperature&Humidity : $\leq 40^{\circ}\text{C}$ & 70% RH maximum