

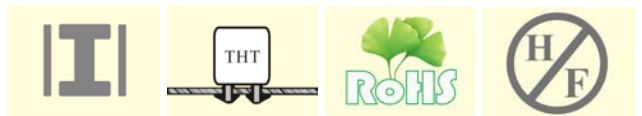
Shielded Radial Choke Inductors GSRS

Features (特長)

- Magnetically shielded construction (閉磁路構造設計)
- Ideal for high current power supplies in all types of electronic instruments. (各種電子機器電源回路應用)

Applications (用途)

- Notebook, Inkjet printer, Copying machine, Display monitor, Cellular phone, ADSL modem, Gaming machine, Color TV, Video tape recorder, Video camera, Microwave oven, Lighting and Car electronics.
(筆記型電腦、噴墨印表機、影印機、顯示監視器、手機、寬頻數據機、遊戲機、彩色電視、錄放影機、攝影機、微波爐、照明設備、汽車電子產品)



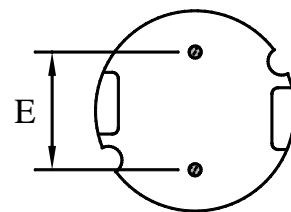
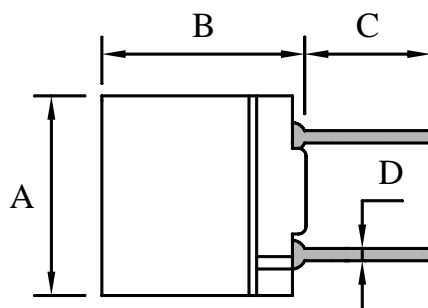
Product Identification (產品識別)

GSRS 0606 - _____ (Ex. GSRS0606-220M)

1 2 3 4

1. Shielded Radial Choke Inductors (閉磁式抗流線圈) (GSRS)
2. Size (尺寸) (0606, 0807)
3. Inductance (電感值)
4. Tolerance (誤差值) (參照表 M 20%, N 30%, Y min)

Configurations & Dimensions (結構圖及規格尺寸)



Bottom View

Unit In mm

Type (型式)	∅A (max)	B (max)	C ±1.0	D ±0.05	E ±0.5
GSRS0606	6.5	6.5	4.0	0.50	4.0
GSRS0807	8.3	7.5	5.0	0.65	5.0

♣ Design as Customer's Requested Specifications. (可依客戶特殊需求設計)

Shielded Radial Choke Inductors

GSRs0606

Electrical Characteristics for GSRs0606 Series [GSRs0606 系列電子特性規格]

Part Number 產品料號	Inductance (μ H) 電感值 (L)	Test Freq. (KHz) 測試頻率	DCR (Ω) (max) 直流阻抗	IDC (A) (max) 定格電流
GSRs0606 – 220M	22.00	1	0.130	0.96
GSRs0606 – 270M	27.00	1	0.180	0.87
GSRs0606 – 330M	33.00	1	0.210	0.78
GSRs0606 – 390M	39.00	1	0.260	0.72
GSRs0606 – 470M	47.00	1	0.290	0.66
GSRs0606 – 560M	56.00	1	0.330	0.60
GSRs0606 – 680M	68.00	1	0.360	0.55
GSRs0606 – 820M	82.00	1	0.390	0.50
GSRs0606 – 101M	100.00	1	0.540	0.45
GSRs0606 – 121M	120.00	1	0.620	0.41
GSRs0606 – 151M	150.00	1	0.720	0.37
GSRs0606 – 181M	180.00	1	0.880	0.34
GSRs0606 – 221M	220.00	1	0.990	0.30
GSRs0606 – 271M	270.00	1	1.520	0.27
GSRs0606 – 331M	330.00	1	1.690	0.25
GSRs0606 – 391M	390.00	1	1.850	0.23
GSRs0606 – 471M	470.00	1	2.850	0.21
GSRs0606 – 561M	560.00	1	3.210	0.19
GSRs0606 – 681M	680.00	1	3.600	0.17
GSRs0606 – 821M	820.00	1	4.870	0.16
GSRs0606 – 102M	1000.00	1	5.560	0.14

※Test Freq. : 1KHz / 0.25V.

※Operating Temp. : $-40^{\circ}\text{C} \sim +125^{\circ}\text{C}$

※Inductance drop = 10% typ. at IDC.

※Storage Temperature&Humidity : $\leq 40^{\circ}\text{C}$ & 70% RH maximum

Shielded Radial Choke Inductors

GSR0807

Electrical Characteristics for GSR0807 Series [GSR0807 系列電子特性規格]

Part Number 產品料號	Inductance (μ H) 電感值 (L)	Test Freq. (KHz) 測試頻率	DCR (Ω) (max) 直流阻抗	IDC (A) (max) 定格電流
GSR0807 – 220M	22.00	1	0.080	1.60
GSR0807 – 270M	27.00	1	0.100	1.40
GSR0807 – 330M	33.00	1	0.140	1.30
GSR0807 – 390M	39.00	1	0.150	1.20
GSR0807 – 470M	47.00	1	0.170	1.10
GSR0807 – 560M	56.00	1	0.190	0.99
GSR0807 – 680M	68.00	1	0.210	0.89
GSR0807 – 820M	82.00	1	0.270	0.81
GSR0807 – 101M	100.00	1	0.320	0.74
GSR0807 – 121M	120.00	1	0.360	0.67
GSR0807 – 151M	150.00	1	0.510	0.60
GSR0807 – 181M	180.00	1	0.570	0.55
GSR0807 – 221M	220.00	1	0.760	0.50
GSR0807 – 271M	270.00	1	0.860	0.45
GSR0807 – 331M	330.00	1	0.970	0.41
GSR0807 – 391M	390.00	1	1.280	0.37
GSR0807 – 471M	470.00	1	1.440	0.34
GSR0807 – 561M	560.00	1	1.610	0.31
GSR0807 – 681M	680.00	1	2.070	0.28
GSR0807 – 821M	820.00	1	2.330	0.26
GSR0807 – 102M	1000.00	1	2.720	0.23
GSR0807 – 122M	1200.00	1	3.980	0.21
GSR0807 – 152M	1500.00	1	4.500	0.19
GSR0807 – 182M	1800.00	1	6.810	0.17
GSR0807 – 222M	2200.00	1	7.560	0.16
GSR0807 – 272M	2700.00	1	8.540	0.14
GSR0807 – 332M	3300.00	1	9.740	0.13
GSR0807 – 392M	3900.00	1	12.900	0.12
GSR0807 – 472M	4700.00	1	14.700	0.11
GSR0807 – 562M	5600.00	1	20.400	0.099
GSR0807 – 682M	6800.00	1	23.000	0.089
GSR0807 – 822M	8200.00	1	30.600	0.081
GSR0807 – 103M	10000.00	1	35.000	0.074

※Test Freq. : 1KHz / 0.25V.

※Operating Temp. : $-40^{\circ}\text{C} \sim +125^{\circ}\text{C}$

※Inductance drop = 10% typ. at IDC.

※Storage Temperature&Humidity : $\leq 40^{\circ}\text{C}$ & 70% RH maximum