

# Ferrite Core

## RH CORE

### Features (特長)

- Low cost , High current (低成本及高電流)
- Lowest EMI (防干擾對策)

### Applications (用途)

- The RH type bead cores are mainly produced for the cable wire assemblers and MATV CATV makers (RH形式的鐵粉芯磁珠產品主要應用於電纜線組裝配和 MATV CATV 製造)
- Power supply applications (電源供應器)



### Product Identification (產品識別)

\_\_\_ RH 15.7 x 7.3 x 28.5 (Ex. \_\_\_ RH15.7x7.3x28.5 / \_\_\_ RH17.5x10.7x28.5)

1    2    3    4    5

1. Material (材質)

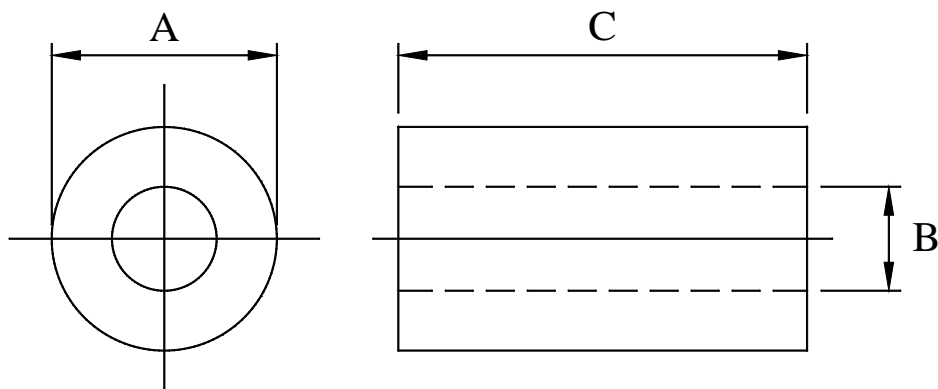
2. Form (型式) (RH or T)

3. Core A Dimension (鐵芯 A 尺寸)

4. Core B Dimension (鐵芯 B 尺寸)

5. Core C Dimension (鐵芯 C 尺寸)

### Configurations & Dimensions (結構圖及規格尺寸)



Unit In mm

Type (型式)	A ±0.5	B ±0.5	C ±0.5
___ RH15.7x7.3x28.5	15.7	7.3	28.5
___ RH17.5x10.7x28.5	17.5	10.7	28.5

♣ Design as Customer's Requested Specifications. (可依客戶特殊需求設計)